

How to access Zoom for PWCS

Cómo acceder Zoom para PWCS

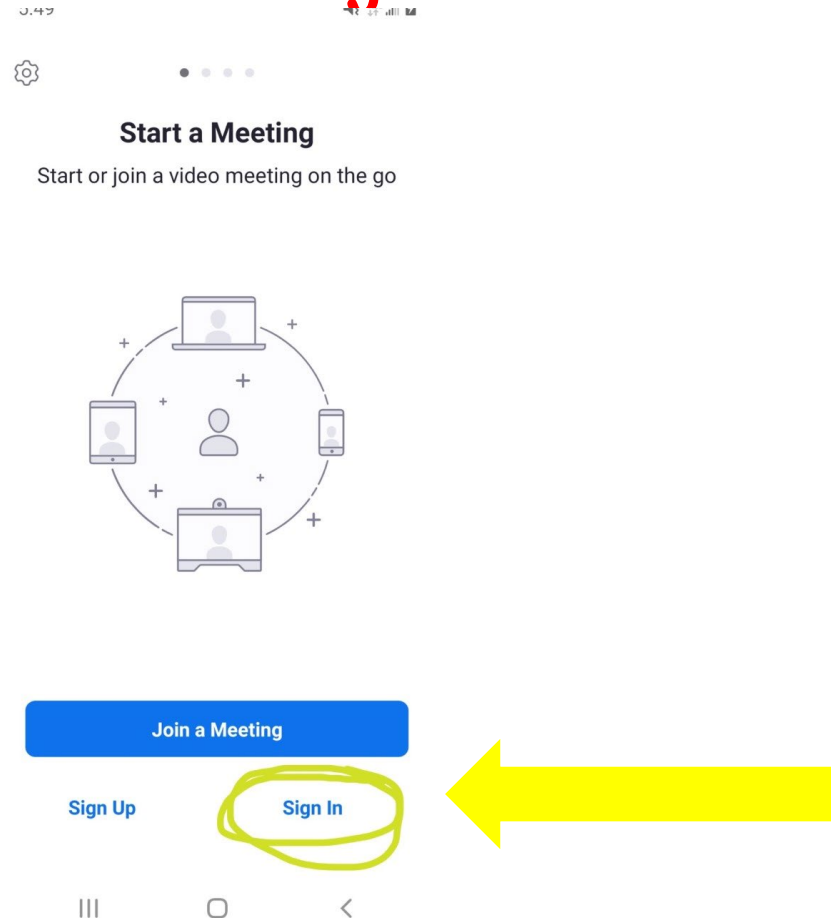
You will find the ZOOM app on your iPad or computer

Encontraran la aplicación ZOOM en su Ipad o Computadora



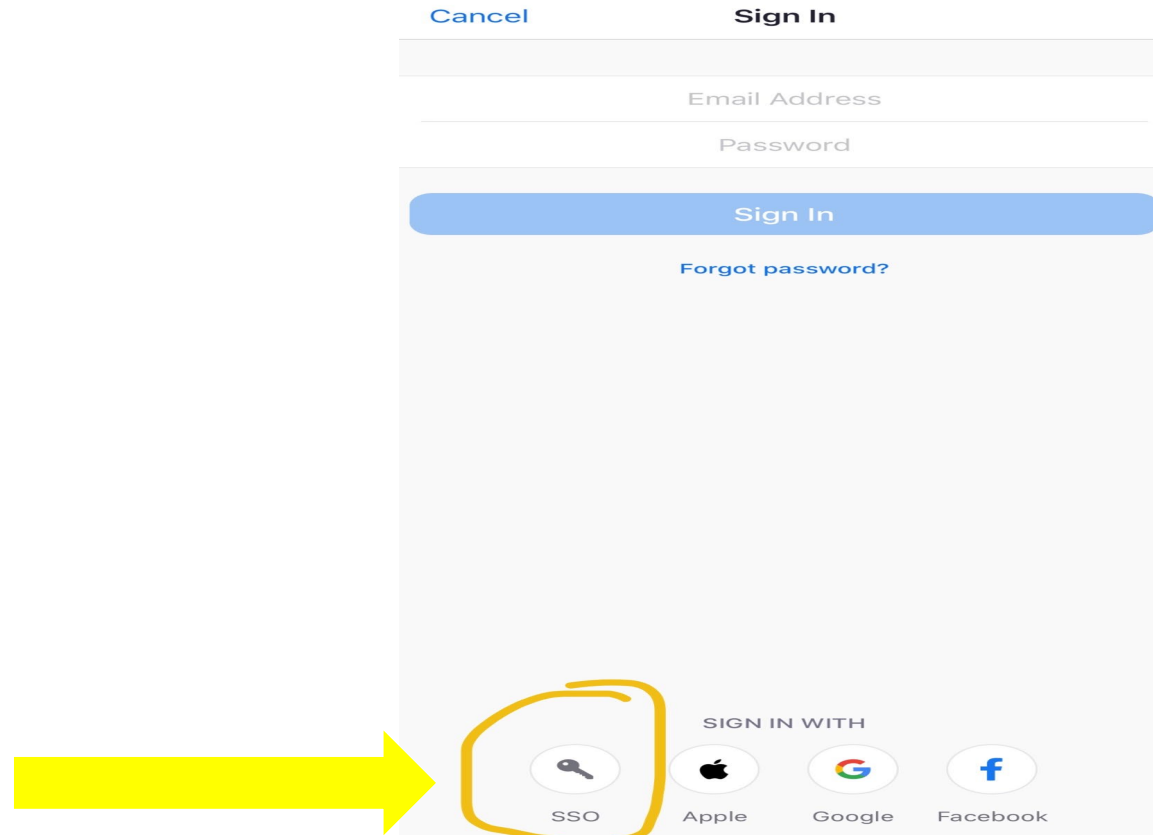
Zoom

Click "Sign In" on the bottom right-hand corner
Haga clic en Sign In (iniciar sesión) en la esquina derecha que esta hasta abajo



Click the key icon that says SSO

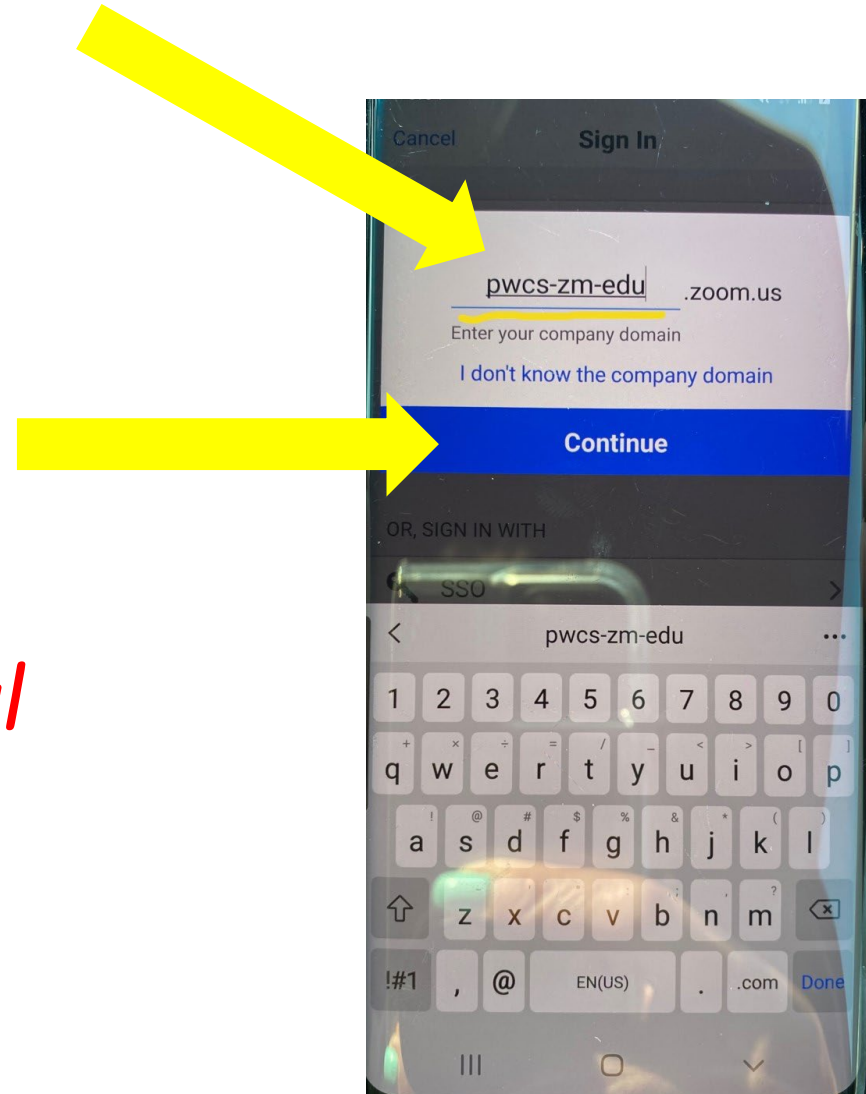
Haga clic donde esta la llave y dice SSO



1. Type in pwcs-zm-edu in the space provided
1. *Escriba pwcs-zm-edu en el espacio indicado*

2. Click the blue rectangle that says continue

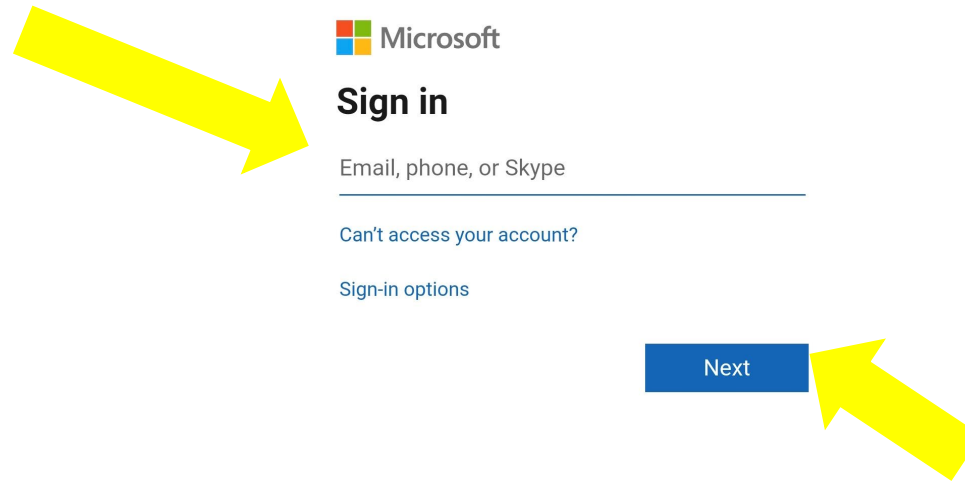
2. *Haga clic en el rectángulo azul*



1. Type in your child's PWCS e-mail address

(If you do not know your child's e-mail, ask your teacher)

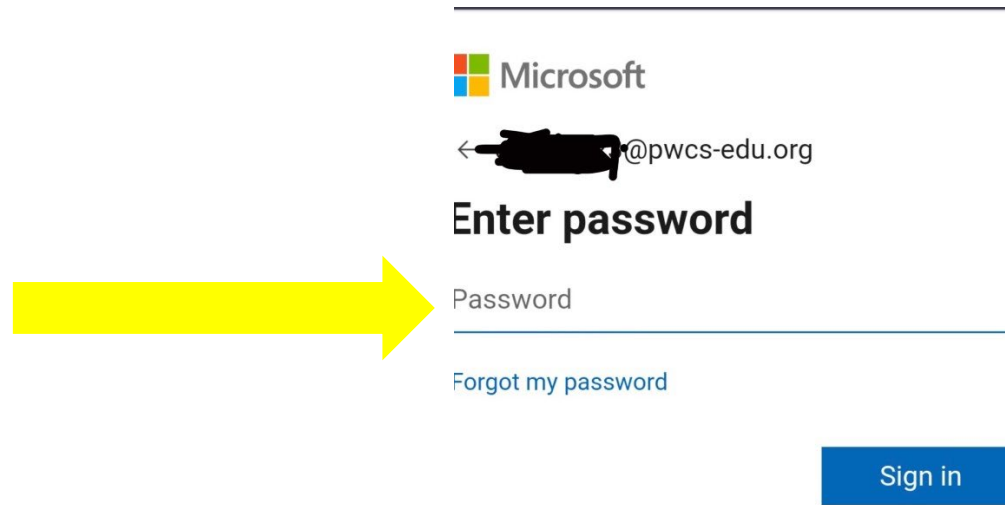
1. Escriba la dirección de correo electrónico de PWCS de su hijo (Si no sabe el correo electrónico de su hijo, pregunte a su maestra)



2. Click "NEXT"

2. Haga clic in la palabra "NEXT"

1. Type in your child's password
1. Escriba la contraseña de su hijo



The screenshot shows a Microsoft login interface. At the top, there is a horizontal line. Below it is the Microsoft logo and the text "Microsoft". Underneath is an email address field containing a redacted email address followed by "@pwcs-edu.org". Below the email field is the heading "Enter password". A large yellow arrow points from the left towards the "Password" input field. Below the input field is a link that says "Forgot my password". At the bottom right of the form is a blue button labeled "Sign in".

2. Click "Sign In"
2. Haga clic in "Sign In"

Click "YES" to stay signed in
Haga clic en "YES" (SI) para permanecer conectado

← Sign in to your account
login.microsoftonline.com

 Microsoft

@pwcs-edu.org

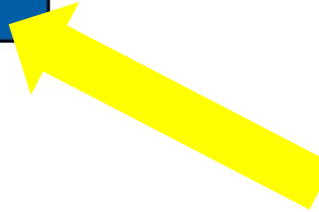
Stay signed in?

Do this to reduce the number of times you are asked to sign in.

Don't show this again

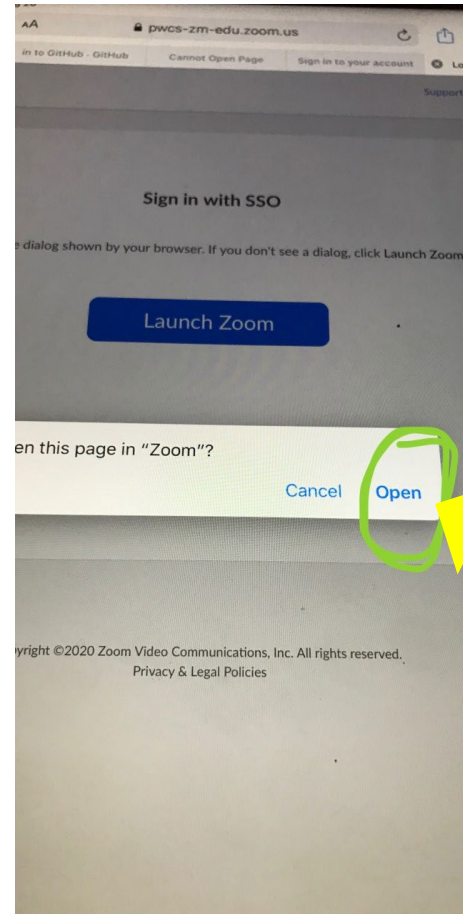
No

Yes



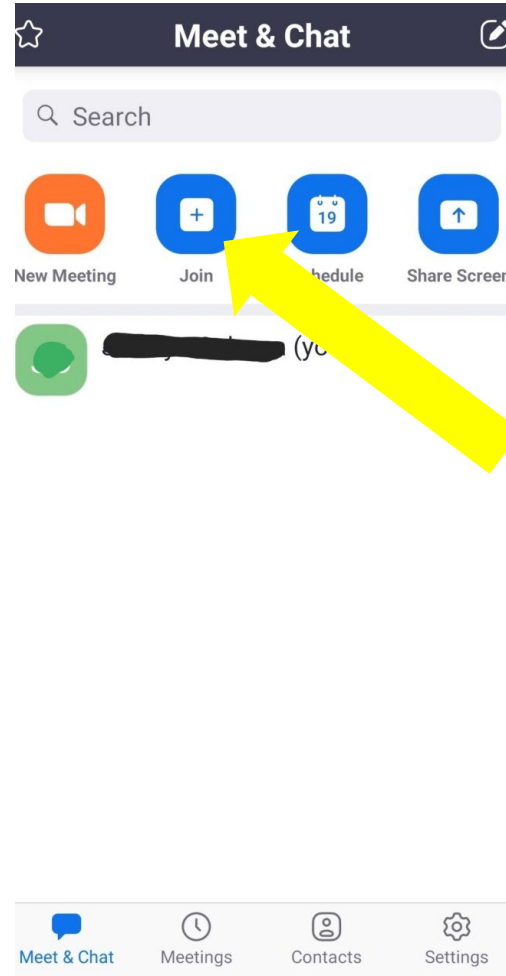
If you are directed to this page, click
"OPEN"

Si se le dirige a esta página, haga clic en
"OPEN"



Click "JOIN"

Haga clic en la palabra "JOIN"



Enter the meeting ID provided by your child's teacher

Ingrese el ID de la reunión que le indica su maestra

